

# HOW TO ASSEMBLE THE WRISTBAND OF TMT250

## PREPARATION:



TMT250 tamper detection device



Allen key, size 2  
(Not included in the package)



TMT250 device

## STEP 1

Unscrew the bolts of the lid with allen key:



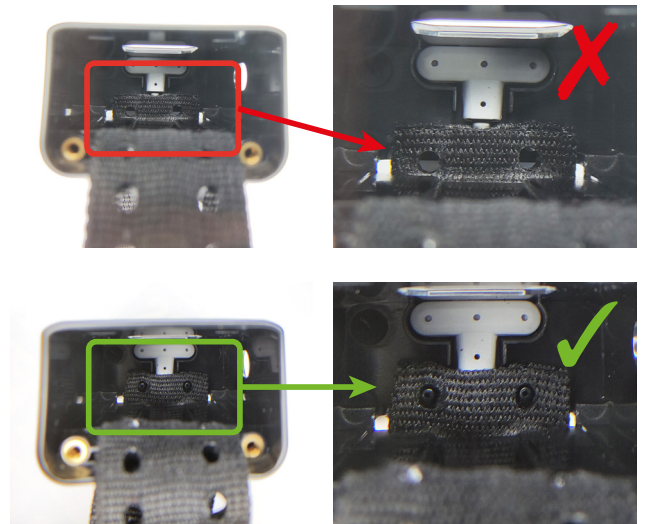
## STEP 2

Remove the lid of the device by lowering rubber tie and pulling the wristband.



## STEP 3

Before inserting TMT250 into the tamper detection device, ensure that the wristband is securely placed in the back of the device.



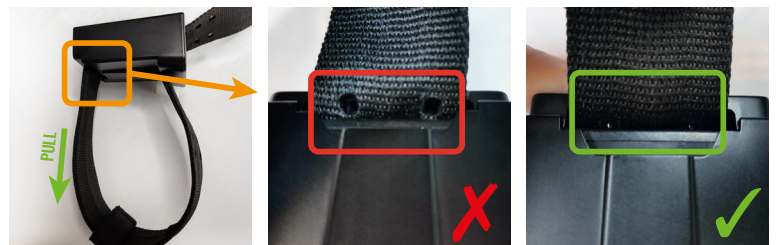
## STEP 4

Make sure that the wristband securely stays in place. Then, insert TMT250 device all the way in, so that contacts of TMT250 would face outside of tamper detection device.



## STEP 5

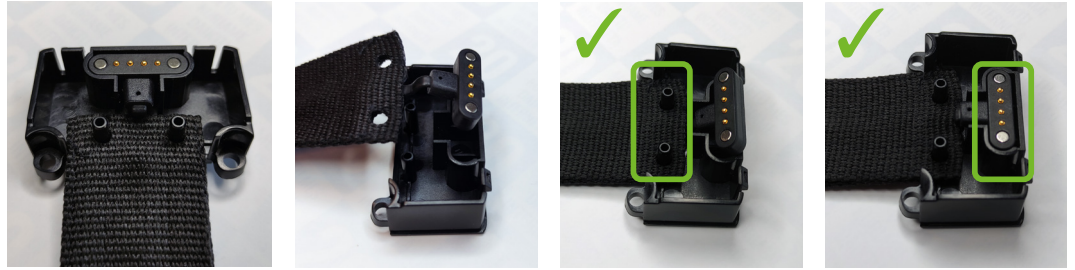
After inserting the device check if the wristband has not slipped out by pulling the wristband. Keep the cover unclosed while pulling the wristband softly. If it slips out, repeat Step 3 and 4.



## STEP 6

Make sure the wristband is securely in place on the lid.

If not, place the wristband into the lid and then push contacts firmly in place.



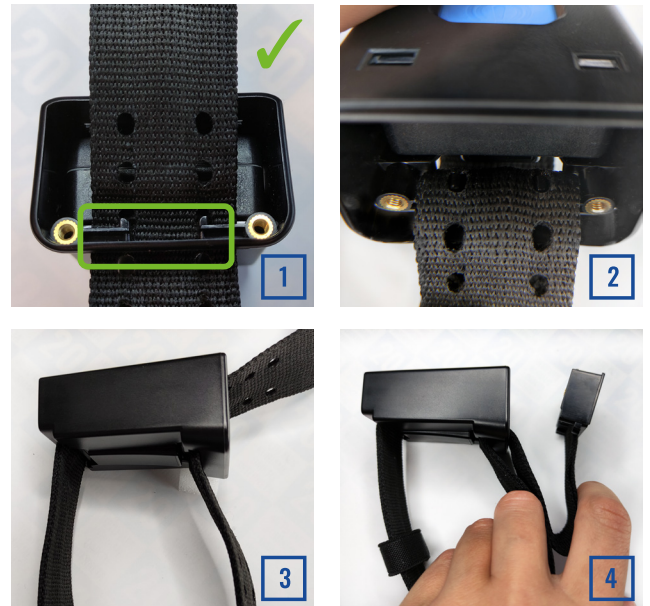
## STEP 7

Pull the wristband to reach the comfortable size for wearing. Then, put tamper detection device on a preferable limb.



## STEP 8

Tighten the wristband so that the holes in the wristband match with protrusions in tamper detection device. Bend the wristband, make a loop to insert the lid and close it.



## STEP 9

Screw in the bolts of the lid with allen key:



### ⚠ CAUTION!

Do not overtighten bolts on the lid. It may cause breakage of the lid. It is sufficient to tighten bolts until there is no play on the lid near bolts.

## STEP 10

PUT ON THE RUBBER TIE:



ASSEMBLED PRODUCT:

